

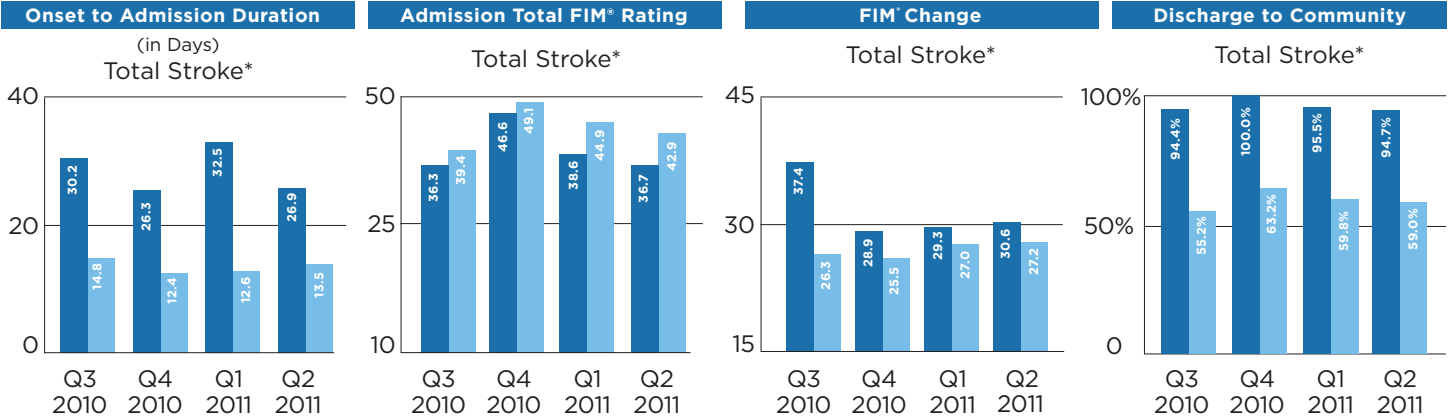
Why Shepherd



for Young Stroke Patients

Stroke Independence

Shepherd
Nation Adjusted



Stroke Independence

- Onset-to-Admission Duration (Total Stroke)**
Published quarterly by UDS. The number of days from acute onset of the impairment to admission to the rehabilitation program.
- Admission Total FIM[®] Rating (Total Stroke)**
Published quarterly by UDS. The functional assessment instrument is composed of 18 items rated on a seven-level scale that represents gradations in function from independence to complete dependence. Measured at admission to the rehabilitation program.

- Total FIM[®] Change (Total Stroke)**
Published quarterly by UDS. The difference in FIM[®] Score as measured at discharge to the rehabilitation program and admission to the rehabilitation program.
- Discharge to Community (Total Stroke)**
Published quarterly by UDS. The percentage of patients who return to a community based setting, including a home (of the patient, relative, or another person), transitional living setting, board and care setting or assisted living residence.

Story Behind the Data

The majority of Stroke Patients at Shepherd Center:

- Arrive with greater functional deficits, thus requiring more care
- Are younger in age
- Are medically more complex due to complications surrounding Hemorrhagic events.
- Are typically slower to recover, which contributes to the delay in Rehab readiness.
- Demonstrate functional improvements at a greater or equal rate, as those treated in the Nation^{*}.
- Receive comprehensive family/patient education which allows caregivers to feel comfortable when taking their loved one home.

Expertise

- Average Patient Age (Total Stroke and Total Brain)**
Published quarterly by UDS. Age recorded at admission to the rehabilitation program.
- Case Volume (Total Stroke and Total Brain)**
Published quarterly by UDS. All Shepherd patients are not reported to UDS. UDS requires patients to receive at least 3 hours of therapy per day to be included in the dataset.
- Average Length of Stay (Total Stroke and Total Brain)**
Published quarterly by UDS. The number of days a patient spends in the rehabilitation program.

Total Brain = Traumatic + Non-Traumatic (excludes Total Stroke)

Expertise

Shepherd
Nation Adjusted

