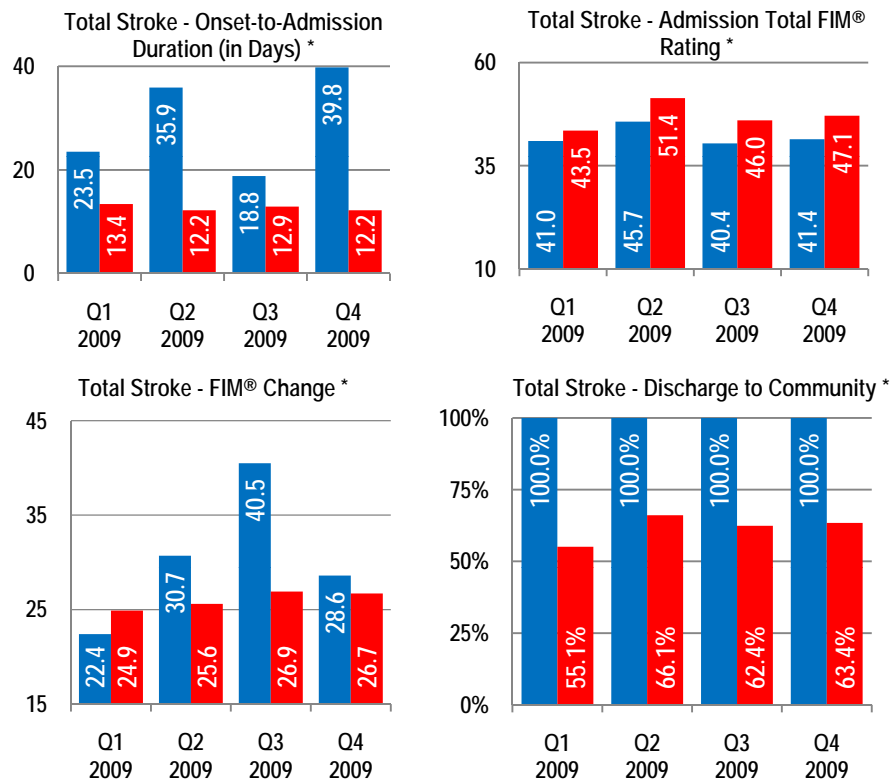




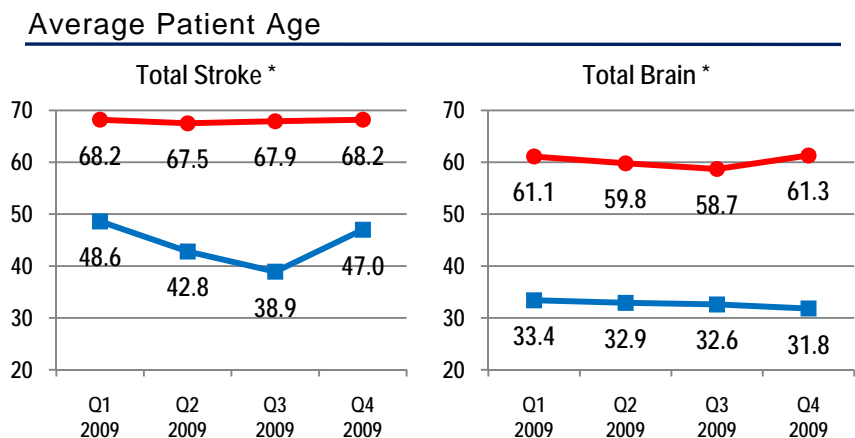
Why Shepherd Center for Young Stroke Patients?



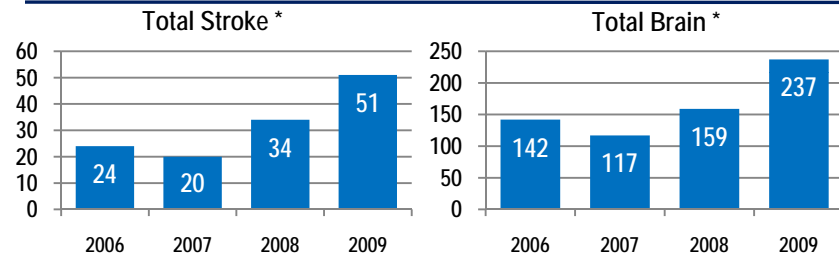
Stroke Independence



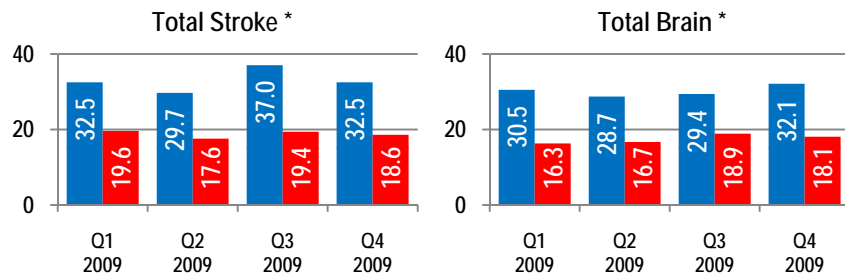
Expertise



Case Volume



Average Length Of Stay (in Days)



Total Brain = Traumatic + Non-Traumatic (excludes Total Stroke)

Story Behind the Data

The majority of Stroke Patients at Shepherd Center:

- Arrive with greater functional deficits, thus requiring more care
- Are younger in age
- Are medically more complex due to complications surrounding Hemorrhagic events.
- Are typically slower to recover, which contributes to the delay in Rehab readiness.
- Demonstrate functional improvements at a greater or equal rate, as those treated in the Nation*.
- Receive comprehensive family/patient education which allows caregivers to feel comfortable when taking their loved one home.

* Source: UDS Quarterly Trends Report M240_9021 (January 1, 2009 – December 31, 2009)