

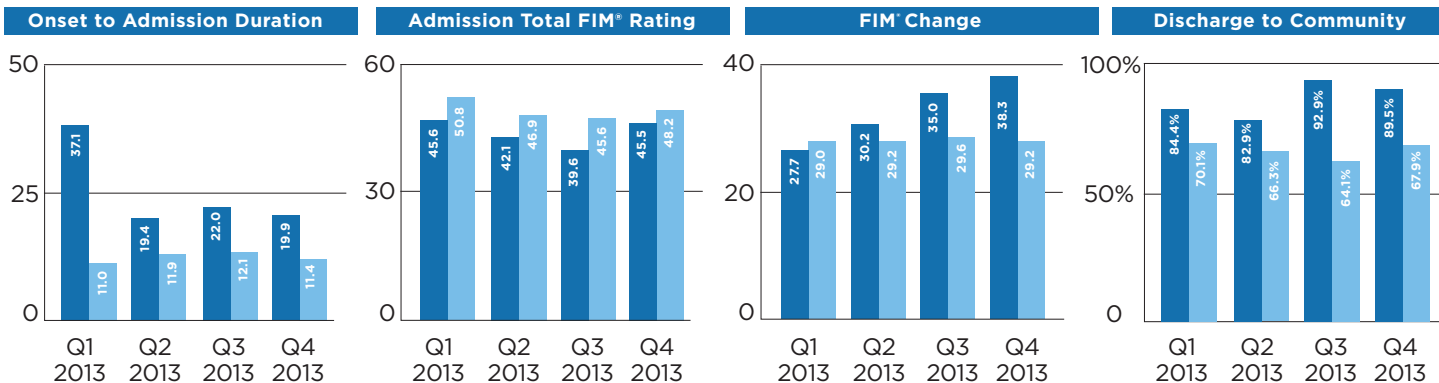
Why Shepherd?

FOR YOUNG STROKE PATIENTS



Stroke Independence

■ Shepherd
■ Nation Adjusted



Stroke Independence

- **Onset-to-Admission Duration** (Total Stroke)
Published quarterly by UDS. The number of days from acute onset of the impairment to admission to the rehabilitation program.
- **Admission Total FIM* Rating** (Total Stroke)
Published quarterly by UDS. The functional assessment instrument is composed of 18 items rated on a seven-level scale that represents gradations in function from independence to complete dependence. Measured at admission to the rehabilitation program.

- **Total FIM* Change** (Total Stroke)
Published quarterly by UDS. The difference in FIM* Score as measured at discharge from the rehabilitation program and admission to the rehabilitation program.
- **Discharge to Community** (Total Stroke)
Published quarterly by UDS. The percentage of patients who return to a community based setting, including a home (of the patient, relative, or another person), transitional living setting, board and care setting or assisted living residence.

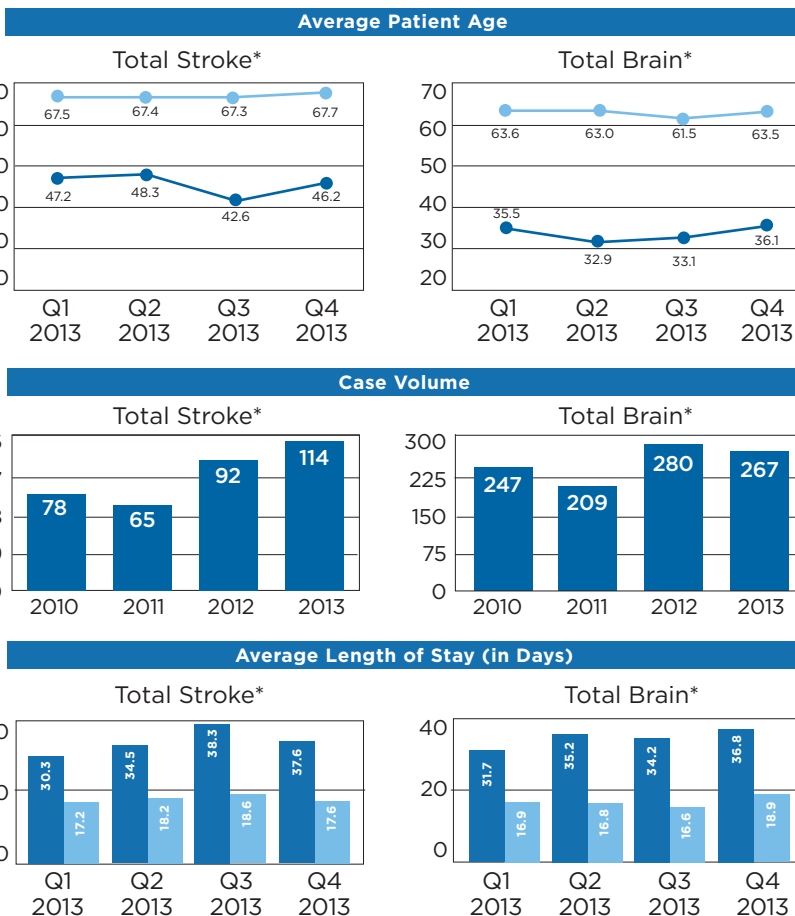
Story Behind the Data

The majority of Stroke Patients at Shepherd Center:

- Arrive with greater functional deficits, thus requiring more care
- Are younger in age
- Are medically more complex due to complications surrounding Hemorrhagic events.
- Are typically slower to recover, which contributes to the delay in Rehab readiness.
- Demonstrate functional improvements at a greater or equal rate, as those treated in the Nation*.
- Receive comprehensive family/patient education which allows caregivers to feel comfortable when taking their loved one home.

Expertise

■ Shepherd
■ Nation Adjusted



Total Brain = Traumatic + Non-Traumatic (excludes Total Stroke)